

# Rawl-Tap-In™

## Typical Applications:

- 5mm for plasterboard: light-weight household fixtures, eg light switches, cable ducting and light duty bathroom fittings.
- 6.5mm for aerated blockwork: for installing alarm systems, telephone trunking, pipes, conduits, sockets and junction boxes.



1. Flange to prevent push through.
2. Anti-rotation fins stop spinning when tightening screw.

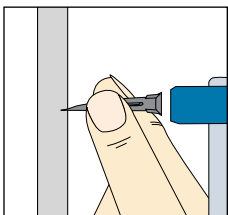
3. 'Snap-set' design to maximise expansion for extra grip.
4. Engineered precision tip for easy penetration into substrate.

- **5mm size for plasterboard**  
Use with 4.5mm screws. Punches a clean hole with virtually no damage to either side of plasterboard.
- The fast, simple hammer-in fixing for plasterboard and aerated blockwork.
- **6.5mm size for aerated blockwork.** For use with different length of 4.5 and 5mm screws in 2.8 N/mm<sup>2</sup> blockwork.
- Designed to cope with high torques of power screwdrivers. Can be used in higher strength block if hole is drilled first.

## Product Specification

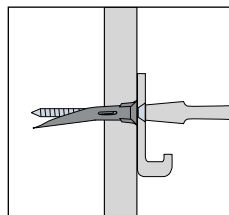
DESC.	SCREW DIA. (mm)	MAX. FIXTURE THICKNESS (mm)	FIXINGS PER PACK	
			RETAIL	TRADE
5mm for plasterboard	4.5 (No.8)	15	10, 25, 50	-
6.5mm for aerated blockwork	5 (No.10)	10	10, 25, 50	100

## Installation

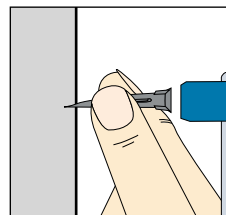


### PLASTERBOARD

1. Lightly tap in until fixing has penetrated at least 5mm. Then tap until flush. If plasterboard is wallpapered or skimmed, use a screwdriver to break the surface.

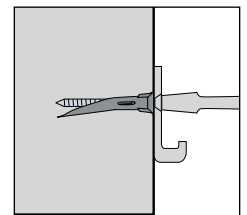


2. Place fixture in position, insert screw and tighten until secure. Avoid overtightening. Caution: Avoid excessive or offset hammering.



### AERATED BLOCKWORK

1. Hammer in until flush (As with similar fixings take care to hammer in squarely to avoid breaking).



2. Place fixture in position, insert screw and tighten until secure. Avoid overtightening.